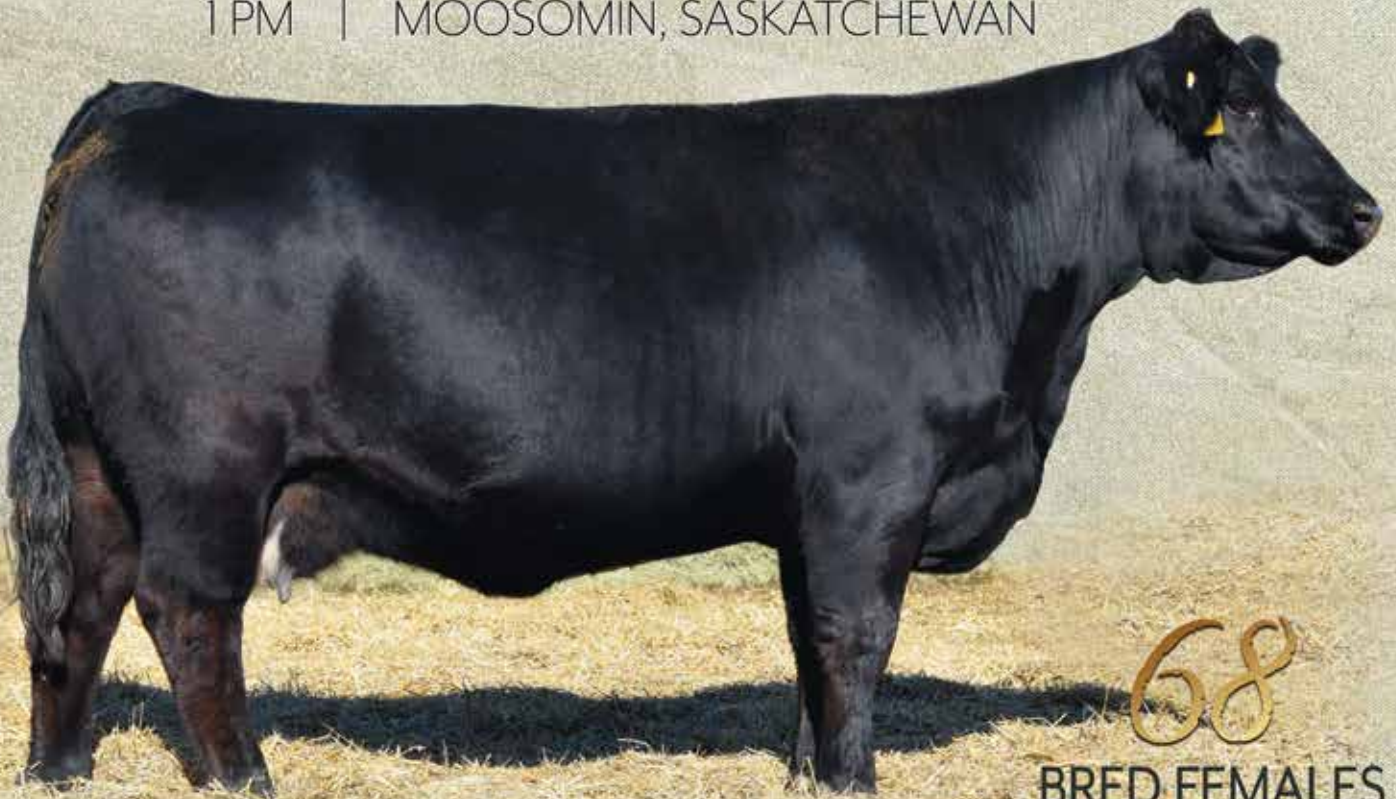




WEDNESDAY, DECEMBER 8, 2021

1 PM | MOOSOMIN, SASKATCHEWAN



68

BRED FEMALES
ON OFFER

Welcome Everyone!

While events in the past couple of years have really thrown us a curve ball, the cattle industry will once again overcome its challenges! I look forward to the future with optimism and confidence and thank you for your interest in my program here at Spring Creek. In my experience, if you have the feed and can buy when everyone is selling, it's usually a good business move. Oil was down to ten dollars a barrel; now it's eighty. Cattle may be the same.

In the cattle industry we work hard to reach our individual goals, but we also all work together to make Canadian beef the best and safest in the world. We help each other succeed by cultivating good relationships and mutual respect, as well as standing by our product.

My life on the ranch has been made much easier by my good fortune in finding Neels and Gerrit from South Africa. Thanks to them, my golf handicap is getting better and better! This summer we also added young Sanguine Whitehead to the team.

I have worked for several years with Bohrson Marketing and T Bar C. Please contact them with any questions or ideas you might have.

I'd be happy to get a call from you before the sale. I'm interested in your program, your breeding philosophy, and your goals. Better yet, come for a visit and a tour of the cattle. Coffee is always on.

Pictures were taken October 18 and 19, and videos shortly after.

As the calendar turns to a new year may you and your family find good health, and an appreciation of what truly matters. We wish you happiness and prosperity. Our family continues to grow. Dan and Olga have three kids: Vivian, John and Katie. Sean and Simina, Jack and Shea; and Lauren and Charlie have a little girl who was born in August. Her name is Sunny. My Mom will be 102 this month.

Your attendance at our Sale is very much appreciated. The Sale will start at 1:00 PM, with lunch preceding. We look forward to seeing you there.

Brian McCarthy



Spring Creek Simmentals
Red Rose Angus
Brian McCarthy
P.O. Box 467
Moosomin, SK S0G 3N0
www.springcreeksimmentals.com
brian.mccarthy@live.ca





**WEDNESDAY, DECEMBER 8 - 1PM
AT THE FARM - MOOSOMIN, SK**

SALE OFFERING

Black Simmental Cows	15
Red Simmental Cows	11
Black Simmental Heifers	19
Red Simmental Heifers	9
Black Angus Heifers	9
Sim/Angus Heifers	5
Total Offering	68

Internet Bidding Available

DLMS
www.dlms.ca

For more information Call DLMS Reps:
Whitney Bosovich 780.991-3025
Mark Shologan 780.699.5082

Sale Day Phones	Brian McCarthy Cell (306) 435-7527 Sharon McCarthy Cell..... (306) 434-6590 Neels Janse van Rensburg (306) 434-0414 Gerrit Hayward..... (306) 434-6005
Sale Management	<u>Bohrson Marketing Services</u> Scott Bohrson..... (403) 370-3010 Rob Voice..... (306) 270-6082 Jay Sibbald..... (403) 899-2625 Cody Haney (403) 845-8806 <u>T Bar C Cattle Co. Ltd.</u> Chris Poley..... (306) 220-5006 Shane Michelson (403) 363-9973 Ben Wright (519) 374-3335
Sale Staff	Auctioneer, Chris Poley..... (306) 220-5006
Representatives	Joanne Best, Simmental Focus Bruce Holmquist, CSA General Manager
Accommodations	Canalta Hotel (877) 342-7422 Motel 6 (306) 435 -3666 Best Western (306) 435-4700
Health Care	Full vaccination protocol including Scour Bos 4 and Scour Bos 9 vaccines.
Delivery & Settlement	Cattle to be picked up at the farm sale day or have trucking arranged within two days, unless prior arrangements have been made. Settlement must be made before cattle leave the farm.
'THE' Fees	Spring Creek Simmentals will pay the 2022 'THE' enrollment fees for all the Simmental sale cattle.

Brian McCarthy has done it again with an outstanding set of females that are selected from the heart of the herd. With last year's sale not taking place, it is double the opportunity for you get 2 years of production cows to select from as all the B & C females are on offer. An outstanding set of proven cows on offer along with a select group of bred heifers makes this an opportune sale to attend with cattle to enhance your program.

The Springcreek prefix is recognized world-wide as they have built a powerful program with maternal strength and performance combined. In previous sales, these cattle have gone on and produced significant ROI for the successful buyers and we annually feel this sale is an ideal spot to acquire high production cattle in everyone's budget. Whether you are seeking the next donor female or strong production cow, we are confident it lies within this 32 page catalogue.

68 excellent Simmental, Angus & SimAngus females are on offer Wednesday, December 8 at the Spring Creek location. We have worked closely with Brian and the Spring Creek program for over a decade and are very familiar with the program and would be able to assist you if you can't attend. We do encourage you to join us for great hospitality and a big time offering of cattle that are guaranteed to impress.

Best regards,
The Bohrson Marketing Team

**BOHRSON
MARKETING SERVICES**

Springcreek Estate 58H

Purebred Jan. 16, 2020 MBJ 58H Homo Polled Black
 NCB COBRA 47Y LFE MCDAVID 413C
NGDB STRUCTURE 34D **SPRINGCREEK ABBEY 99E**
 NGDB LOUISE 411B SPRINGCREEK ABBEY 10Z

				EPD'S						
BW	ADJ WW	ADJ YW	CE	BW	WW	YW	MCE	MWWT	Milk	
104	859	1573	4.5	6.6	111.2	161.6	4.9	84	28.4	



Rendezvous Paramount 230F

Purebred Jan. 17, 2018 AIA 230F Homo Polled Black
 LFE THE DARK NIGHT 350U SPRINGCREEK HOT SHOT 80A
LFE BS LEWIS 3173C **RENDEZVOUS LINNE 230D**
 LFE BS KATARINA 2013A RENDEZVOUS MS PARA 156Z

				EPD'S						
BW	ADJ WW	ADJ YW	CE	BW	WW	YW	MCE	MWWT	Milk	
87	930	N/A	11.3	2.5	82.7	123.6	5.3	73.1	31.7	



CMS Fireball 813F

Purebred Jan. 8, 2018 CMS 813F Homo Polled Homo Black
 R PLUS PRAIRIE FIRE DRAKE POKER FACE 2X
CMS RAPID FIRE 635D **CMS SODA POP 519C**
 LVS ZANTA 10Z HPF CREAM SODA Y010

				EPD'S						
BW	ADJ WW	ADJ YW	CE	BW	WW	YW	MCE	MWWT	Milk	
85	712	1245	11.2	0.2	59.4	76.6	7.5	58.6	28.9	



Double Bar D Radar 531G

Purebred Feb. 15, 2019 RLD 531G Homo Polled Red
 W/C LOADED UP 1119Y IF AMERICAN PRIDE 0987X
W/C BANKROLL 811D **DOUBLE BAR D LINNE 428D**
 MISS WERNING KP 8543U SPRINGCREEK LINNE 107U

				EPD'S						
BW	ADJ WW	ADJ YW	CE	BW	WW	YW	MCE	MWWT	Milk	
75	842	1448	17.7	0.3	70.3	99.4	10.8	62.5	27.3	



Springcreek Redford 55H

Purebred Jan. 14, 2020 MBJ 55H Homo Polled Red
 SPRINGCREEK LINER 56U SPRINGCREEK SPARK PLUG
SPRINGCREEK LADIES MAN 90E **IPU 308Z POCOHONTAS 25E**
 SPRINGCREEK BROOKE 68Z IPU 105L POCOHONTAS 308Z

				EPD'S						
BW	ADJ WW	ADJ YW	CE	BW	WW	YW	MCE	MWWT	Milk	
88	837	1432	5.8	2.3	75	114.5	7.3	77.8	40.3	



Springcreek Spark Plug

Purebred Jan 9, 2015 MBJ 23C Homo Polled Red
 DOUBLE BAR D MAESTRO KOP CROSBY 137W
ANCHOR DVIPER 103W **SPRINGCREEK BROOKE 68Z**
 PRL LOPEZ 147L SPRINGCREEK BROOKE 11W

				EPD'S						
BW	ADJ WW	ADJ YW	CE	BW	WW	YW	MCE	MWWT	Milk	
99	864	1517	6.9	2.6	75.9	125.4	8.5	79.7	41.7	



SVS Brooks 669D

Purebred Feb. 11, 2016 TLAS 669D Homo Polled Red
 TNT BOOTLEGGER Z268 SUNNY VALLEY UP-ROAR 90U
MRL RED WHISKEY 101B SVS RED SARA 92X
 MRL MISS 677Y/HP-HOP 3D MISS SARA 158U

BW	ADJ	ADJ	CE	BW	WW	EPD'S			Milk
	WW	YW				YW	MCE	MWWT	
89	884	1399	11.7	1.6	86.3	129.5	5.8	75.7	32.5



SBSF Eastwood 22E

Purebred Jan. 19, 2017 SBSF 22E Homo Polled Red
 DRAKE POKER FACE 2X WINCHESTER HR P8315
CMS SOCHI 307A SBSF SAHARA 7A
 BLK PRIMADONNA 930W SBSF MS ACCELERATOR 37Y

BW	ADJ	ADJ	CE	BW	WW	EPD'S			Milk
	WW	YW				YW	MCE	MWWT	
72	815	1437	21.6	-4.4	58	90.9	13	58	29



Springcreek Ladies Man 90E

Purebred Jan. 20, 2017 MBJ 90E Homo Polled Red
 RCC/TCF LINE DRIVE M181 KOP CROSBY 137W
SPRINGCREEK LINER 56U SPRINGCREEK BROOKE 68Z
 NEVAS L93 SPRINGCREEK BROOKE 11W

BW	ADJ	ADJ	CE	BW	WW	EPD'S			Milk
	WW	YW				YW	MCE	MWWT	
106	871	1458	4.1	3.4	73.8	109.3	5.6	76.1	39.2



Springcreek Blue Chip 9D

Purebred Jan. 6, 2016 MBJ 9D Homo Polled Red
 RCC/TCF LINE DRIVE M181 MSR KANSASTANK 235M
SPRINGCREEK LINER 56U SPRINGCREEK TARA 111R
 NEVAS L93 SPRINGCREEK BROOKE 38L

BW	ADJ	ADJ	CE	BW	WW	EPD'S			Milk
	WW	YW				YW	MCE	MWWT	
94	884	1516	4.5	5.1	101.6	151.8	5.9	77.3	26.5



Peak Dot No Doubt 202F

Angus Jan 16, 2018 PDAR 202F
 MOGCK BULLSEYE SAV ELIMINATOR 9105
HOOVER NO DOUBT PEAK DOT MIA 4A
 MISS BLACKCAP ELLSTON J2 MIA OF PEAK DOT 838T

BW	ADJ	ADJ	CE	BW	WW	EPD'S			Milk
	WW	YW				YW	MCE		
60	658	1385	9.0	1.2	52	100	7.0	27	



Bar-H Mindbender 141D

Angus May 9, 2016 AHPC 141D
 GDAR GAME DAY 449 SAV 004 PREDOMINANT 4438
S SUMMIT 956 HFTIBBIE 93U
 S PRIDE ANNA 709 HFTIBBIE 35K

BW	ADJ	ADJ	CE	BW	WW	EPD'S			Milk
	WW	YW				YW	MCE		
68	836	1442	8.0	1.7	63	114	9.0	32	



LOT 1

Blacksand
NEVA 89B

89B was my pick of the heifer calves in the 'Black Sand' Dispersal, and she hasn't disappointed. She traces back to 'Liner 56U's dam. Sons have sold to Steller Farms, Randy Sawley, Leonard & Joyce Benfield, and K & L Ranch. I also used some semen on a 'Liner 56U' son. She was conventionally flushed once and seventeen embryos were implanted. She is the foundation kind. She is presently being flushed at Ranchlands Veterinary Services at Carnduff, SK. She sells open.

BW	77
ADJ WW	
EPDs	
CE	11.8
BW	-0.1
WW	64.6
YW	95.3
MCE	7.6
MWWT	55.3
Milk	23

LOT 1

BPG1127770

BSCC 89B

6 March 2014

Homo Polled Hetero Black

SHS ENTICER P1B
HARVIE JDF WALLBANGER 111X
JDF PEPSI 61U
BLACKSAND MIND GAMES 27Z
SPRINGCREEK LINER 104S
BLACKSAND LINNETTE 952W
BDS MISS BLK DIAMOND 13S

WHEATLAND BULL 131L
SAND RANCH HAND
SAND LUCKY CHARMER
BLACKSAND RANCH DEVA 18X
TNT BLACK SHADOW J30
NEVAS L93
NEVAS BLACK FOOT H819

MUIRHEAD LIVEWIRE 95R
KOP CROSBY 137W
KOP MS BENGIE 6P
SPRINGCREEK LOTTO 52Y
SPRINGCREEK TANK 63P
SPRINGCREEK BLK TESS 25T
SPRINGCREEK LINNE 71P

WHEATLAND RED TEDDY 457P
ACS RED REBEL 656S
HAAS RANCH G217
SPRINGCREEK LIMA 69W
MSR KANSAS TANK 235M
SPRINGCREEK TARA 7P
SRS LIMA LI034

BPG793874

MBJ 35B

13 Jan 2014

Homo Polled Homo Black



MBJ 37F

LOT 2

Springcreek
LIMA 35B

She has calved regularly and sons have sold to Brock Thompson, Shore Simmentals and Darrell Petterson. Her 'McDavid' daughter, pictured, shows a lot of promise. She is carrying a valuable calf with the 'Estate' mating.

Bred to Springcreek Estate 58H April 4.
Exposed to Rendezvous Paramount 230F
from April 17 - June 2, 2021

LOT 2

BW	98
ADJ WW	
EPDs	
CE	6.6
BW	4.2
WW	75.1
YW	108.5
MCE	7.6
MWWT	59.6
Milk	22



MBJ 12G



MBJ 35B

LOT 3 *Springcreek* **POLLY 104B**

BPG795932 MBJ 104B 31 Jan 2014 Homo Polled Hetero Black

KOP CROSBY 137W
SPRINGCREEK LOTTO 52Y
SPRINGCREEK BLK TESS 25T

SAND RANCH HAND
SPRINGCREEK POLLY 109X
SPRINGCREEK BLK TESS 102T

MUIRHEAD LIVE WIRE 95R
KOP MS BENGIE 6P
SPRINGCREEK TANK 63P
SPRINGCREEK LINNE 71P
WHEATLAND BULL 131L
SAND LUCKY CHARMER
SPRINGCREEK TANK 63P
SPRINGCREEK LINNE 55P

BW	ADJ		BW	WW	EPDs			
	WW	CE			YW	MCE	MWWT	Milk
88	659	4.7	4.7	81.8	119.3	6.5	70.3	29.4

Bred to Rendezvous Paramount 230F May 6
Exposed to Rendezvous Paramount 230F from April 17 - June 2, 2021

Daughters have sold to Vaughn Shipp and Circle M. Another daughter, pictured, is in my keeper pen of bred heifers. She will have a 'Paramount' calf.



LOT 4 *Springcreek* **LISA 802B**

BPTG1115157 MBJ 802B 31 Jan 2014 Homo Polled Hetero Black

RCC/TCF LINE DRIVE M18I
SPRINGCREEK LINER 56U
NEVAS L93

SPRINGCREEK TANK 57P
SPRINGCREEK RED TARA 40S
SPRINGCREEK REA 85N

HC POWER DRIVE 88H
BOZ SWEET TEMPTATION
TNT BLACK SHADOW J30
NEVAS BLACK FOOT H819
MSR KANSAS TANK 235M
SYS HONEY DEW L137
LRS RED REALITY 33J
BUTE MS LISA 12L

BW	ADJ		BW	WW	EPDs			
	WW	CE			YW	MCE	MWWT	Milk
106	604	4.5	6	82.1	128.8	5.2	66.3	25.2

Bred to Rendezvous Paramount 230F April 12
Exposed to Rendezvous Paramount 230F from April 17 - June 2, 2021

802B is a 'Liner 56U' daughter and her dam was a 'Red Tank 57P' flush cow. Sons have sold to Wunder Farms, Jeremy Isaac and Barry Brigden. She is bred early to 'Paramount'.



MBJ 16H

LOT 5 *Springcreek* **BELLE 46B**

PTG1114917 MBJ 46B 15 Jan 2014 Homo Polled

HARVIE IDF WALLBANGER 111X
SPRINGCREEK ANCHORMAN 82Z
SPRINGCREEK SKY 50T

RCC/TCF LINE DRIVE M18I
SPRINGCREEK LINNE 54R
SPRINGCREEK GRACIE 117K

SHS ENTICER P1B
JDF PEPSI 61U
LAZY S RED SKY 120R
SPRINGCREEK LINNE 23R
HC POWER DRIVE 88H
BOZ SWEET TEMPTATION
MR DD&E THE GANGSTER 3G
SPRINGCREEK BELLE 105E

BW	ADJ		BW	WW	EPDs			
	WW	CE			YW	MCE	MWWT	Milk
82		4.8	3.6	82.5	133.5	-0.1	64.9	23.6

Bred to Springcreek Redford 55H April 15
Exposed to Rendezvous Paramount 230F from April 17 - June 2, 2021

She is bred to one of my high selling red blaze bulls from last spring, 'Redford 55H', that sold to Dale and Judy Smith. Progeny has sold to Brock Thompson, Allan Barnard and Hillside Simmentals.



MBJ 42D

SIMMENTAL COWS

LOT 6

Springcreek
MISTRESS 25B



BW	88
ADJWW	
EPDs	
CE	10.6
BW	1.2
WW	64.5
YW	100.8
MCE	5.7
MWWT	65.7
Milk	33.4

The dam of 25B is the dam of 'Lotto'. I am expecting some embryo calves from her this coming year. A ½ blood daughter sold to Wilson Stock Farm. She has an impeccable udder and her 'Paramount' calf will have a very interesting pedigree.

Bred to Rendezvous Paramount 230F May 10.

Exposed to Rendezvous Paramount 230F from April 17 - June 2, 2021



MBJ 75D



MBJ 25B

PG793224 MBJ 25B 10 Jan 2014 Homo Polled

SHS ENTICER P1B
HARVIE JDF WALLBANGER 11X
JDF PEPSI 61U
SPRINGCREEK WALLBANGER 11Z
RCC/TCF LINE DRIVE M18I
SPRINGCREEK LINNE 72S
SPRINGCREEK PHALTLESS 74N

MSR KANSAS TANK 235M
SPRINGCREEK TANK 63P
NEVAS L93
SPRINGCREEK BLK TESS 25T
RCC/TCF LINE DRIVE M18I
SPRINGCREEK LINNE 71P
SPRINGCREEK OPAL 12L

MUIRHEAD LIVE WIRE 95R
KOP CROSBY 137W
KOP MS BENGIE 6P
SPRINGCREEK LOTTO 52Y
SPRINGCREEK TANK 63P
SPRINGCREEK BLK TESS 25T
SPRINGCREEK LINNE 71P

HC POWER DRIVE 88H
RCC/TCF LINE DRIVE M18I
BOZ SWEET TEMPTATION
SPRINGCREEK LINNE 12U
SPRINGCREEK TANK 57P
SPRINGCREEK RED TARA 21S
BDV AMANDA L43

PG794665 MBJ 62B 19 Jan 2014 Homo Polled



BW	82
ADJWW	607
EPDs	
CE	7.9
BW	2.4
WW	70.5
YW	105.7
MCE	5.7
MWWT	63.9
Milk	28.6

LOT 7

Springcreek
AMANDA 62B

Some excellent progeny from 62B has sold to KT Ranches, Pheasantdale, Randy Geisler and Roger Fortier. She has a nice set of EPD's and they should work well with 'Paramount'. She is structurally sound in every way.

Bred to Rendezvous Paramount 230F May 28

Exposed to Rendezvous Paramount 230F from April 17 - June 2, 2021



MBJ 108H



MBJ 62B

LOT 7

LOT

8 *Springcreek* **KENDRA 12C**

BPG1134180 MBJ 12C 7 Jan 2015 Homo Polled Homo Black

SPRINGCREEK ALL IN 155Y
SPRINGCREEK OLYMPIAN 66A
SPRINGCREEK LINNE 33R

ROCKYHILLSTOKEN
SPRINGCREEK KENDRA 310X
SPRINGCREEK REDLINE 31S

HART ALL IN W382
SPRINGCREEK BLK TESS 73T
RCC/TCF LINE DRIVE M181
SPRINGCREEK JOSIE 58N
ROCKY HILLS REFORMED
ROCKY HILLS PICK
SPRINGCREEK LINER 91P
KBR 429P

BW	ADJ		CE	BW	WW	EPDs		
	WW	MCE				MWWT	Milk	
68	634	10.3	1.4	74.1	102.7	5.1	58.9	21.8

Bred to Rendezvous Paramount 230F April 17.
Exposed to Rendezvous Paramount 230F from April 17 - June 2, 2021

Her 2021 bull calf is in the top end of the black bull pen. Her previous bred heifer sold to Jean-Francois Leblond. Her 2022 'Paramount' calf should be a good one.



LOT 8



MBJ 36j

LOT

9 *Springcreek* **ARROW 19C**

BPG1134426 MBJ 19C 9 Jan 2015 Homo Polled Hetero Black

RCC/TCF LINE DRIVE M181
SPRINGCREEK LINER 56U
NEVAS L93

SPRINGCREEK BLK TANK 99T
SPRINGCREEK ARROW 104X
SPRINGCREEK LINNE 10R

HC POWER DRIVE 88H
BOZ SWEET TEMPTATION
TNT BLACK SHADOW J30
NEVAS BLACK FOOT H819
SPRINGCREEK TANK 63P
SPRINGCREEK BROOKE 12P
RCC/TCF LINE DRIVE M181
ACS MISS CHUCKWAGON 24M

BW	ADJ		CE	BW	WW	EPDs		
	WW	MCE				MWWT	Milk	
92	725	6.8	3.6	81.1	118.4	6.9	70.9	30.4

Bred to Rendezvous Paramount 230F April 16
Exposed to Rendezvous Paramount 230F from April 17 - June 2, 2021

This is a heavy milking 'Liner 56U' daughter. She is due for an early calf by 'Paramount'.



LOT 9



MBJ 19E

LOT

10 *Springcreek* **HONEY 37C**

BPG1134773 MBJ 37C 13 Jan 2015 Homo Polled Hetero Black

SPRINGCREEK ALL IN 155Y
SPRINGCREEK GOLD STANDARD
SPRINGCREEK GOLDY 135V

SPRINGCREEK TANK 63P
SPRINGCREEK BLK TESS 27U
SYS HONEY DEW L137

HART ALL IN W382
SPRINGCREEK BLK TESS 73T
TNT KNOCK OUT R206
SPRINGCREEK LINNE 6R
MSR KANSASTANK 235M
NEVAS L93
PVF-BF BF26 BLACK JOKER
SYS FORTUNE LIGHT J907

BW	ADJ		CE	BW	WW	EPDs		
	WW	MCE				MWWT	Milk	
84	564	8.8	1.4	63.2	96.3	4.9	42.4	10.8

Bred to Springcreek Estate 58H April 2
Exposed to Rendezvous Paramount 230F from April 17 - June 2, 2021

37C has a tidy udder and has had sons sell to Ward Harden and John Wilson. She is bred to the exciting 'Estate'.



LOT 10



MBJ 84G

LOT 11 *Springcreek*
POLLY 39C



A beautiful cow, with a super udder. Her calf by 'Estate' should be a winner! She has a couple of flush cows in her pedigree and she may well be one herself for the new owner.

Bred to Springcreek Estate 58H April 13
Exposed to Rendezvous Paramount 230F
from April 17 - June 2, 2021

BW	78
ADJWW	692
EPDs	
CE	7.6
BW	3.5
WW	83.9
YW	128.1
MCE	3.1
MWWT	67.3
Milk	25.3



MBJ 142F



MBJ 39C

BPG1134819 MBJ 39C 13 Jan 2015 Homo Polled Homo Black

SHS ENTICER P1B
HARVIE JDF WALLBANGER 111X
JDF PEPSI 61U
SPRINGCREEK WALLBANGER 115Z
RCC/TCF LINE DRIVE M181
SPRINGCREEK LINNE 72S
SPRINGCREEK PHALTLESS 74N

SAST101 SWEET MEAT
HART ALL IN W382
HART LADY LOCATOR P325
SPRINGCREEK POLLY 125Z
TNT KNOCK OUT R206
SPRINGCREEK POLLY 195W
SPRINGCREEK BLK TESS 87S

HART ALL IN W382
SPRINGCREEK ALL IN 155Y
SPRINGCREEK BLK TESS 73T
SPRINGCREEK GOLD STANDARD
TNT KNOCK OUT R206
SPRINGCREEK GOLDY 135W
SPRINGCREEK LINNE 6R

RCC/TCF LINE DRIVE M181
SPRINGCREEK LINER 56U
NEVAS L93
SPRINGCREEK MICKEY 42X
SPRINGCREEK TANK 57P
SPRINGCREEK RED TARA 52S
SPRINGCREEK BROOKE 5M

BPG1135022 MBJ 51C 16 Jan 2015 Homo Polled Hetero Black



LOT 12 *Springcreek*
MICKEY 51C

51C has worked in the pastures and also in the embryo world. Sons have sold to K5 River Ranch, Currah Farms, Crowe Bros, Willow Tree Farms and Harry Danychuk. A daughter is one of my top first calvers. Two more daughters were purchased by Jean-Francois Leblond. She is mated to 'Spark Plug' so she could have a red calf this time.

Bred to Springcreek Spark Plug April 15
Exposed to Rendezvous Paramount 230F
from April 17 - June 2, 2021

BW	96
ADJWW	695
EPDs	
CE	6.2
BW	4.1
WW	77.7
YW	117.8
MCE	5.3
MWWT	61.2
Milk	22.3



MBJ 74G



MBJ 51C

LOT 12

LOT 13 *Springcreek*
DETROIT 78C

This blaze faced 'Olympian' daughter will catch your eye, as will her daughter that also sells in this sale. A son sold to Katlynn Kinsella. I feel the 'Paramount' mating will work well.

Bred to Rendezvous Paramount 230F April 20
Exposed to Rendezvous Paramount 230F from April 17 - June 2, 2021



BW	102
ADJWW	729
EPDs	
CE	1.1
BW	7.6
WW	93.4
YW	127.4
MCE	-2.6
MWWT	65.2
Milk	18.5

LOT 13

BPG1135482 MBJ 78C 21 Jan 2015 Homo Polled Homo Black



MBJ 133G



MBJ 78C

HART ALL IN W382
SPRINGCREEK ALL IN 155Y
SPRINGCREEK BLK TESS 73T
SPRINGCREEK OLYMPIAN 66A
RCC/TCF LINE DRIVE M18I
SPRINGCREEK LINNE 33R
SPRINGCREEK JOSIE 58N

ELLINGSON LEGACY M229
OLF BLACK LEGEND T14
OLF MISS DESPERADO R270
SPRINGCREEK DETROIT 32W
GW BLACK CREEK 289J
SPRINGCREEK BROOKE 12P
BAR 5 MS DETROIT 910G

LOT 14 *Springcreek* ARROW 54C
BPG1135073 MBJ 54C 16 Jan 2015 Hetero Polled Hetero Black

RCC/TCF LINE DRIVE M18I
SPRINGCREEK LINER 56U
NEVAS L93

SPRINGCREEK BLK TANK 99T
SPRINGCREEK ARROW 168X
SPRINGCREEK LINNE 10R

HC POWER DRIVE 88H
BOZ SWEET TEMPTATION
TNT BLACK SHADOW J30
NEVAS BLACK FOOT H819
SPRINGCREEK TANK 63P
SPRINGCREEK BROOKE 12P
RCC/TCF LINE DRIVE M18I
ACS MISS CHUCKWAGON 24M

ADJ		EPDs						
BW	WW	CE	BW	WW	YW	MCE	MWWT	Milk
88	671	7.6	3.3	82.2	118.6	8	82.8	41.7

Bred to Rendezvous Paramount 230F April 2
Exposed to Rendezvous Paramount 230F from April 17 - June 2, 2021

This heavy milker has raised sons for Chad Baglolo and Randy Geisler. She raised a top end heifer calf in 2021. 54C is bred early to 'Paramount' and that should result in a blaze faced calf.



LOT 14



MBJ 11E

LOT 15 *Springcreek* JOSIE 68C
BPG1135327 MBJ 68C 18 Jan 2015 Homo Polled Homo Black

LFEBISS BLACKADVANCE 426U
IPU ADVANCE 144Z
IPU MS. BLACKBIRD 223T

SPRINGCREEK KNOCK OUT 68W
SPRINGCREEK JOSIE 35Z
SPRINGCREEK BESSIE 99R

REMINGTON ON TARGET 2S
LFE BILLY 80M
GOLDEN OPPORTUNITYHR R851
IPU 364C BLACKBRID 140P
TNT KNOCK OUT R206
SPRINGCREEK BLK TESS 10S
RRAR KING ROB 6N
SPRINGCREEK JOSIE 116N

ADJ		EPDs						
BW	WW	CE	BW	WW	YW	MCE	MWWT	Milk
84	622	7.6	3.2	71	102.2	5.9	56	20.5

Bred to Springcreek Estate 58H March 29
Exposed to Rendezvous Paramount 230F from April 17 - June 2, 2021

'Advance' daughters have made nice moderate cows. She has had five consecutive bull calves. Here is another opportunity to get an 'Estate' calf.



LOT 15



MBJ 64F

LOT 16 *Springcreek* AMANDA 88C



BW	90
ADJ WW	653
EPDs	
CE	6.8
BW	4.2
WW	74.6
YW	103.5
MCE	4
MWWT	54.3
Milk	17

LOT 16

BPG1135938

MBJ 88C

25 Jan 2015

Homo Polled Hetero Black

HART ALL IN W382
 SPRINGCREEK ALL IN 155Y
 SPRINGCREEK BLK TESS 73T
SPRINGCREEK OLYMPIAN 66A
 RCC/TCF LINE DRIVE M18I
 SPRINGCREEK LINNE 33R
 SPRINGCREEK JOSIE 58N

REMINGTON ON TARGET 2S
 MADER P BLK RANSOM 23U
 ULTRA STOCKER HELEN 73L
SPRINGCREEK AMANDA 165X
 SAFN PROFITEER 26J
 BDV AMANDA L43
 BDV HANNAH J118

SAS T101 SWEET MEAT
 HART ALL IN W382
 HART LADY LOCATOR P325
SPRINGCREEK ALL IN 155Y
 SPRINGCREEK TANK 63P
 SPRINGCREEK BLK TESS 73T
 SPRINGCREEK JACKIE 47M

MUIRHEAD LIVE WIRE 95R
 KOP CROSBY 137W
 KOP MS BENGIE 6P
SPRINGCREEK AMANDA 113Z
 RCC/TCF LINE DRIVE M18I
 SPRINGCREEK LINNE 12U
 SPRINGCREEK RED TARA 21S

BPG1136531

MBJ 104C

30 Jan 2015

Homo Polled Hetero Black



LOT 17

BW	98
ADJ WW	690
EPDs	
CE	4.8
BW	6.5
WW	90.9
YW	132
MCE	5.4
MWWT	64
Milk	18.5

LOT 17 *Springcreek* AMANDA 104C

This heavy bodied cow will catch your eye. Her dam was a feature cow that sold to Wilson Stock Farm, and her sire was the herd sire that worked so well at Crossroads Simmentals. Sons have sold to Les Schick and Mandan Lake Ranch. She will have an early 'Paramount' calf.

Bred to Rendezvous Paramount 230F
March 29
Exposed to Rendezvous Paramount 230F
from April 17 - June 2, 2021



MBJ 6F



MBJ 105E

LOT 18 *Springcreek* **GOLDY 126C**

BPG1137141 MBJ 126C 6 Feb 2015 Homo Polled Hetero Black

LFEBISS BLACKADVANCE 426U
IPU ADVANCE 144Z
IPU MS. BLACKBIRD 223T

MSR KANSAS TANK 235M
SPRINGCREEK TARA 111R
SPRINGCREEK BROOKE 38L

REMINGTON ON TARGET 2S
LFE BILLY 80M
GOLDEN OPPORTUNITYHR R85I
IPU 364C BLACKBRID 140P
3C FULL FIGURES C288 BLK
MSR 0053K OF 515E ARAP
GW BLACK CREEK 289J
SPRINGCREEK SEQUENCE 9D

BW	ADJ WW	CE	BW	WW	EPDs			
					YW	MCE	MWWT	Milk
84	674	9.5	1.2	68.7	97.4	7.5	65.9	31.5

Bred to SVS Brooks 669D April 15
Exposed to Rendezvous Paramount 230F from April 17 - June 2, 2021

This is a maternal sister to 'Blue Chip'. A son sold to Mittleider Farms and a bred heifer is in my keeper pen. Something a little different here, as she is bred to 'SVS Brooks', a sire with super EPD's and a long string of high sellers.



MBJ 152G

LOT 19 *Springcreek* **LADY 10C**

Lady 10C is an own daughter of the famous 'Erixon Lady 2P'. 10C's progeny have sold to Carmichael Colony and KT Ranches. Two daughters have been retained and she has a top red bull calf this year by 'Ladies Man'. She is bred early to my high selling Red bull from last year's sale.

Bred to Springcreek Redford 55H April 9
Exposed to Rendezvous Paramount 230F from April 17 - June 2, 2021



MBJ 139H



MBJ 10C

R PLUS 7077T
DCR MR MOON SHINE X102
DCR MS SHEARCROCK U302
TNT BOOTLEGGER Z268
TNT GUNNER N208
TNT MISS W70
TNT MISS S47

MV RED LIGHT 406
HOOK'S RED QUORUM 55H
HOOK'S APPLAUSE 59F
ERIXON LADY 2P
IPU FUTUREVISION 35F
ERIXON LADY 8M
GORMLEA GRACE 311G

PTG1134105 MBJ 10C 6 Jan 2015 Homo Polled



BW	72
ADJWW	574
EPDs	
CE	5.3
BW	4.8
WW	76.6
YW	111.1
MCE	1.4
MWWT	68.1
Milk	29.8

LOT 20

**Springcreek
RIVAL 16C**

Her dam was my pick of the heifer calves at the Kopp Dispersal, and this cow now works for Timm Cattle Co. 16C has 'Line Drive' in her lineage, and that is always a good thing. She will have an exciting 'Estate' calf in January.

**Bred to Springcreek Estate 58H April 8
Exposed to Rendezvous Paramount 230F
from April 17 - June 2, 2021**

BW	81
ADJ WW	684
EPDs	
CE	9.8
BW	2.1
WW	73.7
YW	106.5
MCE	6.4
MWWT	64
Milk	27.1



LOT 20

PG1134311

MBJ 16C

7 Jan 2015

Homo Polled

HC POWER DRIVE 88H
RCC/TCF LINE DRIVE M18I
BOZ SWEET TEMPTATION
SPRINGCREEK LINER 91P
SSS-SCF CHUCKWAGON 008J
ACS MISS CHUCKWAGON 24M
GFP MISS ZENITH 24J

IPU REVOLUTION 172U
RJV RIVAL 13Y
RPP RUSTY 437P
KOP MS RIVAL 61A
R PLUS 2169M
KOP MS BENGIE 27T
KOP MS FREIGHTLINER 64P

R PLUS BLACKEDGE
LFE BLACK LAKOTA 385W
KJLI RAZZLE DAZZLE 628R
NUG ROYAL RED 324A
TRIPLEC EL PODEROSO REY
TRIPLE C SMARTY PANTS R
GFI GRAMMS DELIGHT L17

HC POWER DRIVE 88H
RCC/TCF LINE DRIVE M18I
BOZ SWEET TEMPTATION
SPRINGCREEK LINNE 35U
SPRINGCREEK TANK 57P
SPRINGCREEK RED TARA 62S
SPRINGCREEK JOSIE 58N

PG1135096

MBJ 58C

16 Jan 2015

Homo Polled

LOT 21

**Springcreek
GRACIE 58C**

This is a gorgeous cow with a nice udder. I am expecting three embryo calves this spring by 'Spark Plug'. A full sister to these embryos is in my bred keeper pen. She is bred to the hetero-black bull, 'Paramount'. Full disclosure: she is not as quiet as most of my cows, but she has never been a problem to handle.

**Bred to Rendezvous Paramount 230F
April 17
Exposed to Rendezvous Paramount 230F
from April 17 - June 2, 2021**

BW	98
ADJ WW	721
EPDs	
CE	4.8
BW	4.1
WW	80.3
YW	119.4
MCE	-0.1
MWWT	59.5
Milk	19.3



LOT 21



LOT 22 *Springcreek* **BGOLD90C**
 PG1136057 MBJ 90C 26 Jan 2015 Homo Polled

KOP CROSBY 137W
ERIXON POWER PLAY 102Y
 ERIXON LADY 2P

ACS RED REBEL 656S
SPRINGCREEK B GOLD 21W
 SPRINGCREEK RED TARA 90S

MUIRHEAD LIVE WIRE 95R
 KOP MS BENGIE 6P
 HOOK'S RED QUORUM 55H
 ERIXON LADY 8M
 WHEATLAND RED TEDDY 457P
 HAAS RANCH G217
 SPRINGCREEK TANK 57P
 MS BGS PETULA 25J

BW	ADJ			BW	WW	EPDs		
	WW	CE	MCE			YW	MCE	MWWT
88	586	9.9	1.5	64.5	90	10.5	56.2	23.9

Bred to Springcreek Estate 58H April 9
 Exposed to Rendezvous Paramount 230F from April 17 - June 2, 2021

Past daughters have sold to Stoney Creek and Timm Cattle Co. and a daughter also sells in this sale. She has a nice set of EPD's and is bred early to 'Estate'.



LOT 22



MBJ 136H

LOT 23 *Springcreek* **BELLE 91C**
 PTG1136058 MBJ 91C 26 Jan 2015 Homo Polled

HARVIE JDF WALLBANGER 111X
SPRINGCREEK ANCHORMAN 82Z
 SPRINGCREEK SKY 50T

RCC/TCF LINE DRIVE M18I
SPRINGCREEK LINNE 54R
 SPRINGCREEK GRACIE 117K

SHS ENTICER P1B
 JDF PEPSI 61U
 LAZY S RED SKY 120R
 SPRINGCREEK LINNE 23R
 HC POWER DRIVE 88H
 BOZ SWEET TEMPTATION
 MR DD&E THE GANGSTER 3G
 SPRINGCREEK BELLE 105E

BW	ADJ			BW	WW	EPDs		
	WW	CE	MCE			YW	MCE	MWWT
90	696	4.3	4.5	84.2	132.5	0.6	68.1	26

Bred to SVS Brooks 669D April 4
 Exposed to Rendezvous Paramount 230F from April 17 - June 2, 2021

Daughters of 91C have sold to Gurney Farms and Jean-Francois Leblond and she has a nice black bull for the upcoming Bull Sale. Her dam also had a perfect udder. I would look forward to her 'Brooks' calf.



LOT 23



MBJ 127J

LOT 24 *Springcreek* **JOSIE 102C**
 PG1136491 MBJ 102C 30 Jan 2015 Homo Polled

DOUBLE BAR D TRUE GRIT
DOUBLE BAR DTG 412A
 DOUBLE BAR D STAR 103R

ACCI HUSTLER 2N
SPRINGCREEK JOSIE 113W
 SPRINGCREEK BLK SKY 117T

TNT TANKER U263
 WHEATLAND LADY 822U
 GRINALTA'S POLLED REGENT
 DOUBLE BAR D STAR 81K
 SS GOLD MINE L42
 CPR KORONA
 LAZY S RED SKY 120R
 SPRINGCREEK BESSIE 99R

BW	ADJ			BW	WW	EPDs		
	WW	CE	MCE			YW	MCE	MWWT
93	673	5.9	3.4	71.7	103.5	-0.8	59.5	23.6

Bred to Springcreek Estate 58H April 1
 Exposed to Rendezvous Paramount 230F from April 17 - June 2, 2021

Progeny have sold to A J Zachedniak and to Jean-Francois Leblond. She is a good milker and I would expect a good blaze faced 'Estate' calf.



LOT 24



MBJ 128J

LOT

25

Springcreek
GRACIE 132C



LOT 25

BW	106
ADJ WW	845
EPDs	
CE	0.9
BW	8.4
WW	77
YW	116.1
MCE	3.8
MWWT	63.8
Milk	25.3

This is a very productive cow. She has had two high selling 'Eastwood' sons in the two most recent sales. One went to Walsh Farms and the other to City View Farms Ltd. Two daughters have been retained. I bred her back to 'Eastwood' for the fourth consecutive time, as it sure works!

**Bred to SBSF Eastwood 22E March 30
Exposed to Rendezvous Paramount 230F
from April 17 - June 2, 2021**



MBJ 46H

PG1137197

MBJ 132C

9 Feb 2015

Homo Polled

R PLUS BLACKEDGE
LFE BLACK LAKOTA 385W
KJLI RAZZLE DAZZLE 628R
NUG ROYAL RED 324A
TRIPLE C EL PODEROSO REY
TRIPLE C SMARTY PANTS R
GFI GRAMMS DELIGHT L17

MCINTOSH EDGE 15T
ERIXON WELLINGTON 133W
LAZY BAR-B SUSIEQ 6P
SPRINGCREEK GRACIE 95Z
LCHMN BODYBUILDER 7303F
SPRINGCREEK GRACIE 55W
SPRINGCREEK GRACIE 17L

TNT POWER SURGET404
MRL HIGH VOLTAGE 155X
MRL MISS 371T
KOP SPARTAN 113A
KOP CROSBY 137W
KOP MS CROSBY 43Y
KOP MS WHEATIE 52U

TNT GUNNER N208
SWAN LAKE GUNNER 2W
BDS BLK DIAMOND 41T
SWAN LAKE GRACE 89Z
WHEATLAND RED ACE 747T
MAPLE KEY GRACE 62X
JUSTABOUT MS IVY BOLT

PG1136902

JVB 15C

12 Jan 2015

Homo Polled



LOT 26

BW	90
ADJ WW	922
EPDs	
CE	4.1
BW	7
WW	93.5
YW	133.4
MCE	2.8
MWWT	82.2
Milk	35.4

I purchased 15C as a bred heifer through an Agribition Sale. Her 'Eastwood' son in last year's sale led off the Red bulls and sold to Quandt Bros. in North Dakota, where he is working well. Another son sold previously to Leonard & Joyce Benfield. 15C has an 'Eastwood' heifer calf this year, one which I will be sure to keep. She was exposed to KWA Shamrock 151H but was also AI'd to 'Eastwood', so the resulting calf will have to be DNA'd.

**Bred to KWA 151D & SBSF Eastwood 22E
April 8
Exposed to Rendezvous Paramount 230F
from April 17 - June 2, 2021**



MBJ 93H

LOT

26

Swan Lake
GRACE 15C

LOT 27 *Springcreek* **ARROW 22H**

BPG1300978 MBJ 22H 6 Jan 2020 Homo Polled Hetero Black

JS SURE BET 4T
DRAKE POKER FACE 2X
DRAKE TULA 1R

LFE MCDAVID 413C
SPRINGCREEK ARROW 56F
SPRINGCREEK ARROW 75B

SVF/NJC MO TOWN M216
JS BLACK MAGIC WOMAN 13P
TCF/RCC TEMPTATION GJ640
DCC 5N
LFE GOTHAM 819Y
LFE HEAVEN SENT 30X
SPRINGCREEK WALLBANGER 11Z
SPRINGCREEK ARROW 104X

BW	ADJ WW	CE	BW	WW	EPDs			
					YW	MCE	MWWT	Milk
78	645	8.5	2.1	75.3	112.7	7	67.8	30.1

Exposed to Double Bar D Radar 531G April 1 - July 16. Observed bred April 6.

'Poker Face' daughters have nice udders and make productive cows. She has well balanced EPD's.



LOT 27



MBJ 56F

LOT 28 *Springcreek* **KENDRA 37H**

BPG1301573 MBJ 37H 9 Jan 2020 Homo Polled Homo Black

LFE GOTHAM 819Y
LFE MCDAVID 413C
LFE HEAVEN SENT 30X

SPRINGCREEK OLYMPIAN 66A
SPRINGCREEK KENDRA 12C
SPRINGCREEK KENDRA 310X

LFE THE DARK NIGHT 350U
LFE BEST LADY 47W
LFE BISS BLACKADVANCE 426U
LFE BS MISS LEWIS 614S
SPRINGCREEK ALL IN 155Y
SPRINGCREEK LINNE 33R
ROCKYHILLS TOKEN
SPRINGCREEK REDLINE 31S

BW	ADJ WW	CE	BW	WW	EPDs			
					YW	MCE	MWWT	Milk
100	656	5.1	5	84.7	121.4	4	70.1	27.7

Exposed to Double Bar D Radar 531G April 1 - July 16. Observed bred April 17.

A homo-black heifer and bred to a homo-black, blaze faced sire. Her dam also sells in this sale.



LOT 28



MBJ 12C

LOT 29 *Springcreek* **AMANDA 38H**

BPG1301577 MBJ 38H 10 Jan 2020 Homo Polled Hetero Black

CMS RAPID FIRE 635D
CMS FIREBALL 813F
CMS SODA POP 519C

SPRINGCREEK LINER 56U
SPRINGCREEK AMANDA 57B
SPRINGCREEK PHEOBE 124T

R PLUS PRAIRIE FIRE
LVS ZANTA 10Z
DRAKE POKER FACE 2X
HPF CREAM SODA Y010
RCC/TCF LINE DRIVE M181
NEVAS L93
SRS J914 PREFERRED BEEF
SPRINGCREEK LINNE 95R

BW	ADJ WW	CE	BW	WW	EPDs			
					YW	MCE	MWWT	Milk
82	660	8.4	2.1	70.3	101.2	6.2	63	27.8

Exposed to Double Bar D Radar 531G April 1 - July 16. Observed bred April 17.

The 'Fireball' heifers continue to develop into broody females. This is a feature heifer. She will have outstanding udder quality and is capable of being the dam of many breeder herd bulls.



LOT 29



MBJ 57B



MBJ 55E

LOT 30 *Springcreek* **ARROW 41H**

BPG1301664 MBJ 41H 10 Jan 2020 Homo Polled Hetero Black

CMS RAPID FIRE 635D
CMS FIREBALL 813F
CMS SODA POP 519C

SPRINGCREEK LINER 56U
SPRINGCREEK ARROW 55E
SPRINGCREEK ARROW 36A

R PLUS PRAIRIE FIRE
LVS ZANTA 10Z
DRAKE POKER FACE 2X
HPF CREAM SODA Y010
RCC/TCF LINE DRIVE M18I
NEVAS L93
TNT GUNNER N208
SPRINGCREEK ARROW 168X

BW	ADJ		CE	BW	WW	EPDs		
	WW	CE				YW	MCE	MWWT
94	684	8	2.8	73.3	101	6.2	66.6	29.9

Exposed to Double Bar D Radar 531G April 1 - July 16.

This is a very nice looking heifer that comes with some paint! She will calve a little later in the spring.



MBJ 134E

LOT 31 *Springcreek* **LASS 45H**

BPG1301799 MBJ 45H 12 Jan 2020 Homo Polled Homo Black

CMS RAPID FIRE 635D
CMS FIREBALL 813F
CMS SODA POP 519C

LFE MCDAVID 413C
SPRINGCREEK LASS 134E
SPRINGCREEK LASS 91B

R PLUS PRAIRIE FIRE
LVS ZANTA 10Z
DRAKE POKER FACE 2X
HPF CREAM SODA Y010
LFE GOTHAM 819Y
LFE HEAVEN SENT 30X
SPRINGCREEK LINER 56U
SPRINGCREEK LASS 6X

BW	ADJ		CE	BW	WW	EPDs		
	WW	CE				YW	MCE	MWWT
98	663	4.8	5.3	77.9	111.2	4.9	72.9	33.9

Exposed to Double Bar D Radar 531G April 1 - July 16.

These blaze faced cattle are always popular.



MBJ 99B

LOT 32 *Springcreek* **GRACIE 56H**

BPG1302311 MBJ 56H 15 Jan 2020 Homo Polled Hetero Black

CMS RAPID FIRE 635D
CMS FIREBALL 813F
CMS SODA POP 519C

HART ALL IN V382
SPRINGCREEK GRACIE 99B
SPRINGCREEK TARA 131T

R PLUS PRAIRIE FIRE
LVS ZANTA 10Z
DRAKE POKER FACE 2X
HPF CREAM SODA Y010
SAST101 SWEET MEAT
HART LADY LOCATOR P325
MSR KANSAS TANK 235M
SPRINGCREEK JOSIE 58N

BW	ADJ		CE	BW	WW	EPDs		
	WW	CE				YW	MCE	MWWT
98	654	5.4	4.6	72.6	100.2	3	60.1	23.8

Exposed to Double Bar D Radar 531G April 1 - July 16.

Package up these baldy heifers by 'Fireball'. They are going to make top cows. Her dam is a very heavy bodied cow. Her dam sold to Anthony Fortier in Quebec.

LOT 33 *Springcreek* **BROOKE 63H**

BPTG1302699 MBJ 63H 16 Jan 2020 Homo Polled Hetero Black

RCC/TCF LINE DRIVE M181
SPRINGCREEK LINER 56U
NEVAS L93

KOP CROSBY 137W
SPRINGCREEK BROOKE 68Z
SPRINGCREEK BROOKE 11W

HC POWER DRIVE 88H
BOZ SWEET TEMPTATION
TNT BLACK SHADOW 130
NEVAS BLACK FOOT H819
MUIRHEAD LIVEWIRE 95R
KOP MS BENGIE 6P
WHEATLAND RED TEDDY 457P
SPRINGCREEK RED TARA 48T

BW	ADJ			BW	WW	EPDs			Milk
	WW	CE	CE			YW	MCE	MWWT	
96	697	6.1	3.5	78.1	121.8	6.6	78.3	39.2	

Exposed to Double Bar D Radar 531G April 1 - July 16.

A feature heifer with a ROYAL pedigree. I kept a full flush sister to this heifer. Collecting daughters of 68Z would be a wise move IMHO!



MBJ 68Z

LOT 34 *Springcreek* **LISA 65H**

BPG1302702 MBJ 65H 17 Jan 2020 Homo Polled Hetero Black

LFE GOTHAM 819Y
LFE MCDAVID 413C
LFE HEAVEN SENT 30X

SPRINGCREEK OLYMPIAN 66A
SPRINGCREEK LISA 49D
SPRINGCREEK LISA 161X

LFE THE DARK NIGHT 350U
LFE BEST LADY 47W
LFE BISS BLACKADVANCE 426U
LFE BS MISS LEVVIS 614S
SPRINGCREEK ALL IN 155Y
SPRINGCREEK LINNE 33R
SPRINGCREEK LINER 56U
BUTE MS LISA 12L

BW	ADJ			BW	WW	EPDs			Milk
	WW	CE	CE			YW	MCE	MWWT	
68	649	4.8	5.2	82.7	119.3	5.9	69.4	28	

Exposed to Double Bar D Radar 531G April 1 - July 16.

I have kept many 'McDavid' daughters and for sure they make cows with great udders. I kept a twin sister for my program. She is a very quiet heifer.



MBJ 49D

LOT 35 *Springcreek* **ADDIE 70H**

BPG1302753 MBJ 70H 17 Jan 2020 Homo Polled Homo Black

NCB COBRA 47Y
NGDB STRUCTURE 34D
NGDB LOUISE 411 B

SPRINGCREEK LOTTO 52Y
SPRINGCREEK ADDIE 130B
SPRINGCREEK LINNE 77S

LFEVIPER 455U
NCB MISS DREAM 22T
DRAKE POKER FACE 2X
NGDB 204Z
KOP CROSBY 137W
SPRINGCREEK BLK TESS 25T
RCC/TCF LINE DRIVE M181
SPRINGCREEK ADDIE 115J

BW	ADJ			BW	WW	EPDs			Milk
	WW	CE	CE			YW	MCE	MWWT	
110	743	1.9	8.1	99.7	144.9	3.4	77.1	27.2	

Exposed to Double Bar D Radar 531G April 1 - July 16.

This 'Structure' bred has a beautiful dam that now belongs to Rainbow River. 70H is one that I should be keeping. She will be at the top of the sale order. She is powerful, big bodied and has the money stripe.



MBJ 130B



MBJ 27D

LOT 36

BPG1303079 MBJ 83H 21 Jan 2020 Homo Polled Homo Black

Springcreek **GOLDY 83H**

NCB COBRA 47Y
NGDB STRUCTURE 34D
NGDB LOUISE 411 B

LFE STYLE 363B
SPRINGCREEK GOLDY 27D
SPRINGCREEK GOLDY 85X

LFEVIPER 455U
NCB MISS DREAM 22T
DRAKE POKER FACE 2X
NGDB 204Z
LFE POKER FACE 399Z
LFE BS CHARO 127Z
ACS BLACK JACK 758T
SPRINGCREEK LINNE 6R

BW	ADJ		CE	BW	WW	EPDs		
	WW	CE				YW	MCE	MWWT
108	656	5.1	6.8	89.6	133.1	4.9	68.6	23.8

Exposed to Double Bar D Radar 531G April 1 - July 16.

'Structure's' progeny have certainly left their mark! She has a 'showy' presence. Expect a good one here.



MBJ 22C

LOT 37

BPG1303363 MBJ 96H 24 Jan 2020 Homo Polled Homo Black

Springcreek **AMANDA 96H**

CMS RAPID FIRE 635D
CMS FIREBALL 813F
CMS SODA POP 519C

SPRINGCREEK OLYMPIAN 66A
SPRINGCREEK AMANDA 22C
SPRINGCREEK LISA 161X

R PLUS PRAIRIE FIRE
LVS ZANTA 10Z
DRAKE POKER FACE 2X
HPF CREAM SODA Y010
SPRINGCREEK ALL IN 155Y
SPRINGCREEK LINNE 33R
SPRINGCREEK LINER 56U
BUTE MS LISA 12L

BW	ADJ		CE	BW	WW	EPDs		
	WW	CE				YW	MCE	MWWT
82	668	10	1.1	67.4	91	7.6	60.6	26.9

Exposed to Double Bar D Radar 531G April 1 - July 16. Observed bred April 21.

Check out her bottom side pedigree: some very familiar sires that have worked well here.



MBJ 78C

LOT 38

BPG1303552 MBJ 110H 26 Jan 2020 Homo Polled Homo Black

Springcreek **DETROIT 110H**

NCB COBRA 47Y
NGDB STRUCTURE 34D
NGDB LOUISE 411 B

SPRINGCREEK OLYMPIAN 66A
SPRINGCREEK DETROIT 78C
SPRINGCREEK DETROIT 32W

LFEVIPER 455U
NCB MISS DREAM 22T
DRAKE POKER FACE 2X
NGDB 204Z
SPRINGCREEK ALL IN 155Y
SPRINGCREEK LINNE 33R
OLF BLACK LEGEND T14
SPRINGCREEK BROOKE 12P

BW	ADJ		CE	BW	WW	EPDs		
	WW	CE				YW	MCE	MWWT
112	780	1.1	8.4	109.2	153.9	0.4	77.7	23.1

Exposed to Double Bar D Radar 531G April 1 - July 16. Observed bred April 21.

This is a powerful 'Structure' heifer. Her dam is a nice blaze faced feature cow that sells in this sale.

LOT 39 *Springcreek* **LINETTE 116H**

BPG1303901 MBJ 116H 28 Jan 2020 Homo Polled Homo Black

LFE MCDAVID 413C
SPRINGCREEK DENALI 21E
SPRINGCREEK LIMA 69Y

SPRINGCREEK OLYMPIAN 66A
SPRINGCREEK LINNETTE 149C
BLACKSAND LINNETTE 952W

LFE GOTHAM 819Y
LFE HEAVEN SENT 30X
SPRINGCREEK LINER 56U
SPRINGCREEK DREAM 34S
SPRINGCREEK ALL IN 155Y
SPRINGCREEK LINNE 33R
SPRINGCREEK LINER 104S
BDS MISS BLK DIAMOND 13S

BW	ADJ			BW	WW	EPDs			Milk
	WW	CE	CE			YW	MCE	MWWT	
90	717	6.2	3.3	87.8	128.2	3.8	73.5	29.6	

Exposed to Peak Dot No Doubt 202F April 1 - July 3. Observed bred April 21.

This is one of the few heifers that is bred Angus. She is a very stylish heifer, as was a full brother which was a high seller.



LOT 39



MBJ 149C

LOT 40 *Springcreek* **MICKEY 137H**

BPG1304936 MBJ 137H 7 Feb 2020 Homo Polled Hetero Black

LFE GOTHAM 819Y
LFE MCDAVID 413C
LFE HEAVEN SENT 30X

SPRINGCREEK ANCHORMAN 82Z
SPRINGCREEK MICKEY 37B
SPRINGCREEK RED TARA 54T

LFE THE DARK NIGHT 350U
LFE BEST LADY 47W
LFE BISS BLACKADVANCE 426U
LFE BS MISS LEWIS 614S
HARVIE JDF WALLBANGER 111X
SPRINGCREEK SKY 50T
SPRINGCREEK TANK 57P
SPRINGCREEK BROOKE 5M

BW	ADJ			BW	WW	EPDs			Milk
	WW	CE	CE			YW	MCE	MWWT	
106	664	0.2	8.4	89.8	130.5	1.4	79.3	34.4	

Exposed to Double Bar D Radar 531G April 1 - July 16. Observed bred April 12.

If you are looking for a little more frame, this might be your heifer. Her dam is a large cow that now resides at Ferme Fortier. These 'McDavid' heifers would make a nice package. They have good size and will have very good udders.



LOT 40



MBJ 37B

LOT 41 *Springcreek* **AMANDA 142H**

BPG1305647 MBJ 142H 14 Feb 2020 Homo Polled Hetero Black

CMS RAPID FIRE 635D
CMS FIREBALL 813F
CMS SODA POP 519C

SPRINGCREEK OLYMPIAN 66A
SPRINGCREEK AMANDA 22D
SPRINGCREEK AMANDA 165X

R PLUS PRAIRIE FIRE
LVS ZANTA 10Z
DRAKE POKER FACE 2X
HPF CREAM SODA Y010
SPRINGCREEK ALL IN 155Y
SPRINGCREEK LINNE 33R
MADER P BLK RANSOM 23U
BDV AMANDA L43

BW	ADJ			BW	WW	EPDs			Milk
	WW	CE	CE			YW	MCE	MWWT	
84	600	10.1	1.1	61.2	82.1	6.3	53	22.4	

Exposed to Double Bar D Radar 531G April 1 - July 16. Observed bred April 6.

Another one for your 'Fireball' package!



LOT 41



MBJ 22D



LOT 42



MBJ 51D

LOT 42 *Springcreek* **MICKEY 148H**
 BPG1306358 MBJ 148H 19 Feb 2020 Homo Polled Homo Black

CMS RAPID FIRE 635D
CMS FIREBALL 813F
 CMS SODA POP 519C

HART ALL IN W382
SPRINGCREEK MICKEY 51D
 SPRINGCREEK MICKEY 42X

R PLUS PRAIRIE FIRE
 LVS ZANTA 10Z
 DRAKE POKER FACE 2X
 HPF CREAM SODA Y010
 SAS T101 SWEET MEAT
 HART LADY LOCATOR P325
 SPRINGCREEK LINER 56U
 SPRINGCREEK RED TARA 52S

BW	ADJ		CE	BW	WW	EPDs		
	WW	CE				YW	MCE	MWWT
90	743	8.3	2.3	73.6	101.3	6	68.5	31.7

Exposed to Double Bar D Radar 531G April 1 - July 16. Observed bred April 11.

Many top sires in her pedigree and from a top cow family!



LOT 43



MBJ 46B

LOT 43 *Springcreek* **BELLE 155H**
 BPG1306932 MBJ 155H 1 Mar 2020 Homo Polled Hetero Black

LFE GOTHAM 819Y
LFE MCDAVID 413C
 LFE HEAVEN SENT 30X

SPRINGCREEK ANCHORMAN 82Z
SPRINGCREEK BELLE 46B
 SPRINGCREEK LINNE 54R

LFE THE DARK NIGHT 350U
 LFE BEST LADY 47W
 LFEISS BLACKADVANCE 426U
 LFE BS MISS LEWIS 614S
 HARVIE JDF WALLBANGER 111X
 SPRINGCREEK SKY 50T
 RCC/TCF LINE DRIVE M181
 SPRINGCREEK GRACIE 117K

BW	ADJ		CE	BW	WW	EPDs		
	WW	CE				YW	MCE	MWWT
106	653	2	6.4	86.1	133	1.2	71.8	28.7

Exposed to Double Bar D Radar 531G April 1 - July 16. Observed bred April 11.

A nice 'McDavid' heifer out of a red cow that sells in this sale. My 'McDavid' cows are uniform in type as well as in udder structure, and are good producers.



LOT 44



GBV 41C

LOT 44 *Springcreek* **CLARA 156H**
 BPG1307283 MBJ 156H 3 Mar 2020 Homo Polled Homo Black

CMS RAPID FIRE 635D
CMS FIREBALL 813F
 CMS SODA POP 519C

NAC OVERDRIVE 5Z
RAINBOWRIVER CLARA 41C
 RAINBOWRIVER BLACKIE 3W

R PLUS PRAIRIE FIRE
 LVS ZANTA 10Z
 DRAKE POKER FACE 2X
 HPF CREAM SODA Y010
 SPRINGCREEK RASHAD 12W
 NAC 38U
 MSC FANTASY
 KLC MISS BRING 321N

BW	ADJ		CE	BW	WW	EPDs		
	WW	CE				YW	MCE	MWWT
82	556	12.1	0.5	53.9	73.5	7.9	49.8	22.8

Exposed to Double Bar D Radar 531G April 1 - July 16.

A homo black 'Fireball', out of a cow that came from Rainbow River.

LOT 45 *Springcreek* **NEVA 158H**

BPG1307500 MBJ 158H 6 Mar 2020 Homo Polled Homo Black

LFE GOTHAM 819Y
LFE MCDAVID 413C
LFE HEAVEN SENT 30X

SPRINGCREEK LOTTO 52Y
SPRINGCREEK NEVA 914A
SPRINGCREEK LINNE 59U

LFE THE DARK NIGHT 350U
LFE BEST LADY 47W
LFEBS BLACKADVANCE 426U
LFE BS MISS LEWIS 614S
KOP CROSBY 137W
SPRINGCREEK BLK TESS 25T
RCC/TCF LINE DRIVE M18I
NEVAS L93

BW	ADJ WW	CE	BW	WW	EPDs			Milk
					YW	MCE	MWWT	
108	653	2.5	6.2	79.4	116	4.2	69.5	29.8

Exposed to Double Bar D Radar 531G April 1 - July 16.

Add up 'McDavid' and the 'Neva' cow family and you should have a good one.



MBJ 914A

LOT 46 *Springcreek* **B.GOLD 701H**

PG1306933 MBJ 701H 11 Jan 2020 Homo Polled

CMS SOCHI 307A
SBSF EASTWOOD 22E
SBSF SAHARA 7A

SPRINGCREEK LINER 56U
SPRINGCREEK B.GOLD 7Z
SPRINGCREEK RED TARA 90S

DRAKE POKER FACE 2X
YR BLK PRIMADONNA 930W
WINCHESTER HR P8315
SBSF MS ACCELERATOR 37Y
RCC/TCF LINE DRIVE M18I
NEVAS L93
SPRINGCREEK TANK 57P
MS BGS PETULA 25J

BW	ADJ WW	CE	BW	WW	EPDs			Milk
					YW	MCE	MWWT	
88	646	12.2	0.9	68	102.3	7.3	62.9	28.9

Exposed to Double Bar D Radar 531G April 1 - July 16. Observed bred April 1.

Sired by the calving ease sire, SBSF Eastwood 22E, combined with the genetic strength of 'Liner 56U' and 'Red Tank'.



MBJ 7Z

LOT 47 *Springcreek* **ADDIE 23H**

PG1300979 MBJ 23H 6 Jan 2020 Homo Polled

CMS SOCHI 307A
SBSF EASTWOOD 22E
SBSF SAHARA 7A

SPRINGCREEK SPARK PLUG
SPRINGCREEK ADDIE 17F
SPRINGCREEK ADDIE 41A

DRAKE POKER FACE 2X
YR BLK PRIMADONNA 930W
WINCHESTER HR P8315
SBSF MS ACCELERATOR 37Y
ANCHOR D VIPER 103W
SPRINGCREEK BROOKE 68Z
HARVIE JDF WALLBANGER 111X
SPRINGCREEK ADDIE 133X

BW	ADJ WW	CE	BW	WW	EPDs			Milk
					YW	MCE	MWWT	
64	594	17.2	-3.7	54.9	88.3	10.4	58.4	30.9

Exposed to Double Bar D Radar 531G April 1 - July 16.

The 'Addie' cow family goes back to the Full Fleck bull, 'Bar None Adler'. She is quiet, stylish and out of a perfect uddered 'Spark Plug' cow.



MBJ 17F



LOT 48



MBJ 68Z

LOT 48 *Springcreek* **BROOKE 77H**
 PTG1302909 MBJ 77H 19 Jan 2020 Homo Polled

IPI RED WESTERN 49X
MILLINGTON BRISK 700S
 KWA MS ROCK 22Z

KOP CROSBY 137W
SPRINGCREEK BROOKE 68Z
 SPRINGCREEK BROOKE 11W

WS BEEF MAKER R13
 IPU 52N POCAHONTAS 215U
 KWA RED ROCK 5T
 LRX DELIGHT 2W
 MUIRHEAD LIVE WIRE 95R
 KOP MS BENGIE 6P
 WHEATLAND RED TEDDY 457P
 SPRINGCREEK RED TARA 48T

BW	ADJ		CE	BW	WW	EPDs		
	WW	CE				YW	MCE	MWWT
80	625	8.5	1.8	72	110.8	5.4	72.5	36.5

Exposed to Peak Dot No Doubt 202F April 1 - July 3. Observed bred April 17.

She is a transplant heifer out of one of the best cows in the business. Her dam, 'Brooke 68Z' was my highest ever selling cow, selling to Maxwell Simmentals & Sun Rise Simmentals.



LOT 49



MBJ 71E

LOT 49 *Springcreek* **JOSIE 94H**
 PG1303158 MBJ 94H 22 Jan 2020 Homo Polled

CMS SOCHI 307A
SBSF EASTWOOD 22E
 SBSF SAHARA 7A

REMINGTON LOCK N LOAD 54U
SPRINGCREEK JOSIE 71E
 SPRINGCREEK JOSIE 87A

DRAKE POKER FACE 2X
 YR BLK PRIMADONNA 930W
 WINCHESTER HR P8315
 SBSF MS ACCELERATOR 37Y
 REMINGTON ON TARGET 2S
 BAR 15 MISS KNIGHT78E-SIG
 HARVIE JDF WALLBANGER 11X
 SPRINGCREEK BESSIE 99R

BW	ADJ		CE	BW	WW	EPDs		
	WW	CE				YW	MCE	MWWT
88	667	12.4	2	78.8	126.4	7	62.2	22.8

Exposed to Double Bar D Radar 531G April 1 - July 16. Observed bred May 25.

94H will develop into a beautiful cow, much like her dam.



LOT 50



MBJ 68Z

LOT 50 *Springcreek* **BROOKE 113H**
 PTG1303869 MBJ 113H 28 Jan 2020 Homo Polled

SPRINGCREEK LINER 56U
SPRINGCREEK BLUE CHIP 9D
 SPRINGCREEK TARA 111R

KOP CROSBY 137W
SPRINGCREEK BROOKE 68Z
 SPRINGCREEK BROOKE 11W

RCC/TCF LINE DRIVE M18I
 NEVAS L93
 MSR KANSAS TANK 235M
 SPRINGCREEK BROOKE 38L
 MUIRHEAD LIVE WIRE 95R
 KOP MS BENGIE 6P
 WHEATLAND RED TEDDY 457P
 SPRINGCREEK RED TARA 48T

BW	ADJ		CE	BW	WW	EPDs		
	WW	CE				YW	MCE	MWWT
108	678	7	3.2	83.7	127.7	7.6	77.6	35.7

Exposed to Double Bar D Radar 531G April 1 - July 16. Observed bred June 7.

This is another transplant heifer from the flush cow 'Brooke 68Z'. 'Blue Chip' daughters are making very productive cows, and his bred heifers topped a few sales last fall.

LOT 51 *Springcreek* **BGOLD136H**

PG1304855 MBJ 136H 7 Feb 2020 Homo Polled

SPRINGCREEK BLUE CHIP 9D
SPRINGCREEK STOCK 10F
BLACKSAND SUE 21A

ERIXON POWER PLAY 102Y
SPRINGCREEK B GOLD 90C
SPRINGCREEK B GOLD 21W

SPRINGCREEK LINER 56U
SPRINGCREEK TARA 111R
ERIXON POWER PLAY 102Y
BLACKSAND LINNETTE 942W
KOP CROSBY 137W
ERIXON LADY 2P
ACS RED REBEL 656S
SPRINGCREEK RED TARA 90S

ADJ			EPDs					
BW	WW	CE	BW	WW	YW	MCE	MWWT	Milk
90	652	8.3	2.9	81.5	119.3	10	67.2	26.4

Exposed to Peak Dot No Doubt 202F April 1 - July 3. Observed bred April 12.

This cow family goes back to a purchase from the 'Black Gold' Dispersal many years ago. They were noted for their correctness in type and in udder quality. Her dam also sells in this sale.



LOT 51



MBJ 90C

LOT 52 *Springcreek* **BELLE140H**

PG1305070 MBJ 140H 11 Feb 2020 Homo Polled

CMS RAPID FIRE 635D
CMS FIREBALL 813F
CMS SODA POP 519C

SPRINGCREEK ANCHORMAN 82Z
SPRINGCREEK BELLE 933E
SPRINGCREEK LINNE 54R

R PLUS PRAIRIE FIRE
LVS ZANTA 10Z
DRAKE POKER FACE 2X
HPF CREAM SODA Y010
HARVIE JDF WALLBANGER 111X
SPRINGCREEK SKY 50T
RCC/TCF LINE DRIVE M181
SPRINGCREEK GRACIE 117K

ADJ			EPDs					
BW	WW	CE	BW	WW	YW	MCE	MWWT	Milk
90	702	6.3	2.9	74.9	109	2	65.5	28

Exposed to Double Bar D Radar 531G April 1 - July 16. Observed bred April 12.

The 'Fireball' progeny start out small and then turn into broody bred heifers. Add some baldy genetics to your program.



LOT 52



MBJ 54R - Maternal Granddam



LOT
T 53

PG1306359 MBJ 149H 19 Feb 2020

Springcreek GOLDY 149H

Homo Polled

CMS RAPID FIRE 635D
CMS FIREBALL 813F
CMS SODA POP 519CLFE MCDAVID 413C
SPRINGCREEK GOLDY 63E
SPRINGCREEK GOLDY 42BR PLUS PRAIRIE FIRE
LVS ZANTA 10Z
DRAKE POKER FACE 2X
HPF CREAM SODA Y010
LFE GOTHAM 819Y
LFE HEAVEN SENT 30X
DRAKE POKER FACE 2X
SPRINGCREEK LINNE 6R

BW	ADJ		CE	BW	WW	EPDs		
	WW	CE				YW	MCE	MWWT
78	590	10.6	0.6	61.1	86.4	7.9	61.8	31.2

Exposed to Double Bar D Radar 531G April 1 - July 16. Observed bred April 6.

Here is an opportunity to put some 'McDavid' influence into your red genetics. Her dam is a strong cow.



MBJ 63E

LOT
T 54

PG1307763 MBJ 159H 8 March 2020

Springcreek HONEY 159H

Homo Polled

CMS RAPID FIRE 635D
CMS FIREBALL 813F
CMS SODA POP 519CANCHOR D VIPER 103W
SPRINGCREEK HONEY 59C
SPRINGCREEK HONEY 50XR PLUS PRAIRIE FIRE
LVS ZANTA 10Z
DRAKE POKER FACE 2X
HPF CREAM SODA Y010
DOUBLE BAR D MAESTRO 100S
PRL LOPEZ 147L
RCC/TCF LINE DRIVE M18I
SPRINGCREEK BLK TESS 27U

BW	ADJ		CE	BW	WW	EPDs		
	WW	CE				YW	MCE	MWWT
80	670	11.9	-0.2	59.8	84.8	7.8	60.3	30.4

Exposed to Double Bar D Radar 531G April 1 - July 16. Observed bred April 19.

This is the youngest red bred heifer. Her dam is Gerrit's 'pet'. I'm surprised he is letting me sell her!



MBJ 59C



LOT 55 **RRAR JAYBIRD 5H**
 2135662 RRAR 5H January 1, 2020 Homo Black

S SUMMIT 956
Sire: BAR-H MINDBENDER 141D
 HFTIBBIE 93U

RRAR UPWARD 35Z
Dam: RRAR JAYBIRD 31F
 RRAR JAYBIRD 3A

GAME DAY 449
 S PRIDE ANNA 709
 S A V 004 PREDOMINANT 4438
 HFTIBBIE 35K
 SITZ UPWARD 307R
 RRAR QUEEN RUTH 1U
 RRAR ALLIANCE 28S
 RRAR JAYBIRD 17Y

BW	ADJ		CE	BW	WW	EPDs		
	WW	CE				YW	MCE	Milk
60	718	12.0	-0.9	66	114	12.0	30	

Exposed to Peak Dot No Doubt 202F April 1 - July 3. Observed bred May 31.

She has very good calving ease EPD's and is from the beautiful 'Jaybird' cow family.



RRAR 3A - Materani Granddam

LOT 56 **RRAR BLACKWILLOW 9H**
 2135666 RRAR 9H January 4, 2020 Homo Black

S SUMMIT 956
Sire: BAR-H MINDBENDER 141D
 HFTIBBIE 93U

VISION UNANIMOUS 1418
Dam: RRAR BLACKWILLOW 26C
 RRAR BLACKWILLOW 8Y

GAME DAY 449
 S PRIDE ANNA 709
 S A V 004 PREDOMINANT 4438
 HFTIBBIE 35K
 VISIONTOPLINE ROYAL STOCKMAN
 VISION EDELLA 665
 RRAR FINAL ANSWER 9W
 RRAR BLACKWILLOW 8R

BW	ADJ		CE	BW	WW	EPDs		
	WW	CE				YW	MCE	Milk
70	569	11.0	-0.8	52	94	11.0	25	

Exposed to Peak Dot No Doubt 202F April 1 - July 3.

- Put a package of these 'Mindbender' daughters together, and you will be glad you did.



RRAR 26C

LOT 57 **RRAR BARBARA 21H**
 2135708 RRAR 21H January 11, 2020 Homo Black

S SUMMIT 956
Sire: BAR-H MINDBENDER 141D
 HFTIBBIE 93U

SAV CAMARO 9272
Dam: RRAR BARBARA 25D
 RRAR BARBARA 57Z

GAME DAY 449
 S PRIDE ANNA 709
 S A V 004 PREDOMINANT 4438
 HFTIBBIE 35K
 S A V FINAL ANSWER 0035
 S A V DUKE GIRL 7348
 SINCLAIR TIME OUT 8P1
 RED RRAR BARBARA 38X

BW	ADJ		CE	BW	WW	EPDs		
	WW	CE				YW	MCE	Milk
90	659	-0.0	3.9	64	112	0.0	29	

Exposed to Peak Dot No Doubt 202F April 1 - July 3.

Her dam is as heavy-bodied an Angus cow as I have.



RRAR 25D



RRAR 31X - Maternal Granddam

LOT 58

2135693 RRAR 32H January 19, 2020 Homo Black

RRAR QUEEN 32H

S SUMMIT 956
Sire: **BAR-H MINDBENDER 141D**
HF TIBBIE 93U

S A V THRIVE 5054
Dam: **RRAR QUEEN 18F**
RRAR QUEEN 31X

GAME DAY 449
S PRIDE ANNA 709
S A V 004 PREDOMINANT 4438
HF TIBBIE 35K
S A V RENOWN 3439
S A V ERICA 9448
DUNLOUISE COMMANDER BOND
CRESCENT CREEK QUEEN RUTH 161R

BW	ADJ WW	CE	BW	WW	EPDs		
					YW	MCE	Milk
92	532	-9.0	5.5	48	92	-3.0	22

Exposed to Peak Dot No Doubt 202F April 1 - July 3.

Her dam is a very easy keeping cow.



RRAR 10B - Maternal Granddam

LOT 59

2135687 RRAR 34H January 21, 2020 Homo Black

RRAR DANA 34H

S SUMMIT 956
Sire: **BAR-H MINDBENDER 141D**
HF TIBBIE 93U

S A V THRIVE 5054
Dam: **RRAR DANA 46F**
RRAR DANA 10B

GAME DAY 449
S PRIDE ANNA 709
S A V 004 PREDOMINANT 4438
HF TIBBIE 35K
S A V RENOWN 3439
S A V ERICA 9448
HF KODIAK 5R
RRAR DANA 51Z

BW	ADJ WW	CE	BW	WW	EPDs		
					YW	MCE	Milk
76	667	4.0	2.3	62	112	5.0	28

Exposed to Peak Dot No Doubt 202F April 1 - July 3.

A 'Mindbender' daughter, and out of a granddaughter of the great 'Kodiak'.



RRAR 40C

LOT 60

2135682 RRAR 39H February 3, 2020 Homo Black

RRAR BLACKWILLOW 39H

S SUMMIT 956
Sire: **BAR-H MINDBENDER 141D**
HF TIBBIE 93U

JL UPWARD 2250
Dam: **RRAR BLACKWILLOW 40C**
RRAR BLACKWILLOW 1A

GAME DAY 449
S PRIDE ANNA 709
S A V 004 PREDOMINANT 4438
HF TIBBIE 35K
SITZ UPWARD 307R
JL BLACKCAP 06171
S A V CAMARO 9272
RRAR BLACKWILLOW 21X

BW	ADJ WW	CE	BW	WW	EPDs		
					YW	MCE	Milk
84	641	5.0	1.7	55	99	5.0	28

Exposed to Peak Dot No Doubt 202F April 1 - July 3.

Her dam is a very quiet, easy keeping cow.

LOT 61 **RRAR TIBBIE 43H**
 2135678 RRAR 43H February 10, 2020 Homo Black

S SUMMIT 956
Sire: BAR-H MINDBENDER 141D
 HFTIBBIE 93U

JL UPWARD 2250
Dam: RRAR TIBBIE 41E
 RRAR TIBBIE 43X

GAME DAY 449
 S PRIDE ANNA 709
 S A V 004 PREDOMINANT 4438
 HFTIBBIE 35K
 SITZ UPWARD 307R
 JL BLACKCAP 06'171
 DUNLOUISE COMMANDER BOND
 CRESCENT CREEK TIBBIE 39R

BW	ADJ		CE	BW	WW	EPDs		
	WW	MCE				Milk		
80	603	3.0	2.4	48	88	6.0	25	

Exposed to Peak Dot No Doubt 202F April 1 - July 3. Observed bred May 9.

She will be a moderate-sized cow and a producer.



RRAR 41E

LOT 62 **RRAR BLACKWILLOW 47H**
 2135674 RRAR 47H February 17, 2020 Homo Black

S SUMMIT 956
Sire: BAR-H MINDBENDER 141D
 HFTIBBIE 93U

MLG PIONEER 40B
Dam: RRAR BLACKWILLOW 27E
 RRAR BLACKWILLOW 24C

GAME DAY 449
 S PRIDE ANNA 709
 S A V 004 PREDOMINANT 4438
 HFTIBBIE 35K
 JL PIONEER 0062
 SOUTHLAND BLACKBIRD 172T
 S A V INTERNATIONAL 2020
 RRAR BLACKWILLOW 1Y

BW	ADJ		CE	BW	WW	EPDs		
	WW	MCE				Milk		
92	681	-1.0	4.3	64	112	5.0	30	

Exposed to Peak Dot No Doubt 202F April 1 - July 3.

The service sire to these Angus heifers calves easily.



RRAR 24C - Maternal Granddam

LOT 63 **RRAR BLACKWILLOW 50H**
 2135671 RRAR 50H February 20, 2020 Homo Black

S SUMMIT 956
Sire: BAR-H MINDBENDER 141D
 HFTIBBIE 93U

MLG PIONEER 40B
Dam: RRAR BLACKWILLOW 38E
 RRAR BLACKWILLOW 40C

GAME DAY 449
 S PRIDE ANNA 709
 S A V 004 PREDOMINANT 4438
 HFTIBBIE 35K
 JL PIONEER 0062
 SOUTHLAND BLACKBIRD 172T
 JL UPWARD 2250
 RRAR BLACKWILLOW 1A

BW	ADJ		CE	BW	WW	EPDs		
	WW	MCE				Milk		
90	633	-1.0	3.8	55	99	4.0	29	

Exposed to Peak Dot No Doubt 202F April 1 - July 3.

The 'Blackwillow' cow family are very productive.



RRAR 38E



MBJ 89F

LOT 64 *Springcreek* AMANDA 18H

BPRS1300782 MBJ 18H 4 Jan 2020 Homo Polled Hetero Black

POSS ELEMENT 215
HBH EXCELLENCE 63E
 GREENBUSH GEORGINA 3X

SPRINGCREEK BLUE CHIP 9D
SPRINGCREEK AMANDA 89F
 SPRINGCREEK AMANDA 907A

POSS EASY IMPACT 0119
 POSS ERIC 004
 HARB PENDLETON 765 J H
 GREENBUSH GEORGINA 5U
 SPRINGCREEK LINER 56U
 SPRINGCREEK TARA 111R
 KOP CROSBY 137W
 SPRINGCREEK AMANDA 54W

BW	ADJ WW	CE	BW	WW	EPDs			Milk
					YW	MCE	MWWT	
60	600	14.7	-2.4	62.3	94.9	10.5	54.7	23.5

Exposed to Double Bar D Radar 531G April 1 - July 16. Observed bred April 19.

Small birth weight and very good calving EPD's.



MBJ 3F

LOT 65 *Springcreek* HONEY 49H

BPRS1301903 MBJ 49H 13 Jan 2020 Homo Polled Hetero Black

S SUMMIT 956
BAR-H MINDBENDER 141D
 HF TIBBIE 93U

SPRINGCREEK BLUE CHIP 9D
SPRINGCREEK HONEY 3F
 SPRINGCREEK HONEY 59C

GDAR GAME DAY 449
 S PRIDE ANNA 709
 SAV 004 PREDOMINANT 443
 HF TIBBIE 35K
 SPRINGCREEK LINER 56U
 SPRINGCREEK TARA 111R
 ANCHOR D VIPER 103W
 SPRINGCREEK HONEY 50X

BW	ADJ WW	CE	BW	WW	EPDs			Milk
					YW	MCE	MWWT	
78	727	13.7	-1.1	83.2	133	8.4	67.2	25.6

Exposed to Double Bar D Radar 531G April 1 - July 16.

These ½ bloods will produce for years.



MBJ 122F

LOT 66 *Springcreek* JAYCEE 102H

BPRS1303371 MBJ 102H 24 Jan 2020 Homo Polled Homo Black

S SUMMIT 956
BAR-H MINDBENDER 141D
 HF TIBBIE 93U

LFE MCDAVID 413C
SPRINGCREEK JAYCEE 122F
 BLACKSAND BLK PEARL 6A

GDAR GAME DAY 449
 S PRIDE ANNA 709
 SAV 004 PREDOMINANT 443
 HF TIBBIE 35K
 LFE GOTHAM 819Y
 LFE HEAVEN SENT 30X
 HARVIE JDF WALLBANGER 111X
 BLACKSAND BLK PEARL 901W

BW	ADJ WW	CE	BW	WW	EPDs			Milk
					YW	MCE	MWWT	
82	700	11.8	0.6	80.8	128.8	6.7	63.8	23.4

Exposed to Double Bar D Radar 531G April 1 - July 16. Observed bred April 19.

Her dam was flushed, with calves coming this calving season.

LOT 67 *Springcreek* **BELLE129H**

BPRS1304271 MBJ 129H 2 Feb 2020 Homo Polled Hetero Black

POSS ELEMENT 215
HBH EXCELLENCE 63E
GREENBUSH GEORGINA 3X

IPU ADVANCE 144Z
SPRINGCREEK BELLE 141F
SPRINGCREEK BELLE 122B

POSS EASY IMPACT 0119
POSS ERIC 004
HARB PENDLETON 765 J H
GREENBUSH GEORGINA 5U
LFEBISS BLACKADVANCE 426U
IPU MS. BLACKBIRD 223T
SPRINGCREEK ANCHORMAN 82Z
SPRINGCREEK BELLE 67Y

ADJ			EPDs						
BW	WW	CE	BW	WW	YW	MCE	MWWT	Milk	
76	686	14	-1	66.6	101.1	8.6	54.4	21.1	

Exposed to Double Bar D Radar 531G April 1 - July 16. Observed bred April 3.

Good calving numbers here. Calves on these 1/2's will all be 3/4 blood Simmental.



MBJ 141F

LOT 68 *Springcreek* **LADY160H**

BPRS1308262 MBJ 160H 12 March 2020 Homo Polled Hetero Black

POSS ELEMENT 215
HBH EXCELLENCE 63E
GREENBUSH GEORGINA 3X

SPRINGCREEK SPARK PLUG
SPRINGCREEK LADY 103F
SPRINGCREEK LADY 10C

POSS EASY IMPACT 0119
POSS ERIC 004
HARB PENDLETON 765 J H
GREENBUSH GEORGINA 5U
ANCHOR D VIPER 103V
SPRINGCREEK BROOKE 68Z
TNT BOOTLEGGER 2268
ERIXON LADY 2P

ADJ			EPDs						
BW	WW	CE	BW	WW	YW	MCE	MWWT	Milk	
78	675	12.7	0.4	67.4	107.1	8.7	60.8	27.1	

Exposed to Double Bar D Radar 531G April 1 - July 16. Observed bred April 14.

The youngest, but bred up early to the blaze faced 'Bank Roll' son.



MBJ 103F





RR 4 - SITE 7 - BOX 28 :: OLDS, AB :: T4H 1T8

If you wish to stop receiving catalogues from BMS,
please email jodie@bohrson.com or call/text
403-519-3515 to be removed from the mailing list



RETURN POSTAGE GUARANTEED
PORT DE RETOUR GARANTI



WEDNESDAY, DECEMBER 8, 2021
1 PM | MOOSOMIN, SASKATCHEWAN